



## Dental Products

### Must-Have Secret Weapons

Autoclavable

### Double Retractors 2.0

Double Retractors x2, Black Board x2

While keeping the same lip & cheek two-way design, the new Double Retractors 2.0 is upgraded to medical grade PPSU.

**NEW**

### Stainless Steel Mirror 2.0

Strong, durable stainless steel, autoclave-proof, the specially designed size, improved shape and thickness ensure maximum intra-oral view without sacrificing patient comfort.



### Bite Turbo 3.0

Handle x1, BT molds x6, BT extended molds x6, Button molds x6  
Designed by Dr. Chris Chang, the new Bite Turbo 3.0 allows you to solve all kinds of deep bite and large horizontal overjet. A simple and powerful tool you should add to your kit!



# 隱形矯正必備器械

## Clear Aligner Plier

678-800

The Tear Drop



678-801

The Vertical



678-802

The Horizontal



678-803

The Hole Punch



678-804

The Spot



678-805

The Petite Punch



678-807

The Counter  
Clockwise Wedge



678-808

The Clockwise Wedge



678-811

The Eraser





# Kerr™

## OptiBond™ Universal

Single-Component Universal Adhesive

### 廣用型黏著劑

ONE STEP.  
ONE BRAND.  
ANY PROCEDURE.



GPDM Monomer



Ternary Solvent System



## Harmonize™

Nanohybrid Universal Composite

### 美學樹脂



DENTAL ADVISOR  
TOP AWARD  
COMPOSITE:  
ESTHETIC



# Surgical Procedures, Mechanics, and Problems in Recovering 51 Impacted Maxillary Canines for 46 Patients with the OBS-3D Lever Arm Appliance

## Abstract

**Objective:** Assess recovery for consecutive impacted maxillary canines (I-U3s).

**Materials and Methods:** Based on three-dimensional (3D) imaging, 51 I-U3s were recovered from 46 patients: 11 male, 35 female, mean age 16.5 years (range 10-36 yr). Orthodontics prepared a path for movement of the I-U3s as needed. Minimally invasive surgery uncovered the I-U3s and removed bone to the level of CEJ. 3D anchorage was provided with a 2 mm diameter stainless steel (SS) OrthoBoneScrew® (OBS). A rectangular slot secured a custom SS wire segment (OBS-3D lever arm) to align the I-U3.

**Results:** Impaction locations were according to side (22 right, 29 left), and surface (32 labial, 19 palatal). I-U3s were optimally aligned in an average of 11.7 months (M), but six more severe labial impactions required up to 17M, and six complete transpositions required 27-30M. Moderate root resorption (<2 mm) on the adjacent lateral incisor was noted for four I-U3s (3 labial, 1 lingual). Gingival recession affected 19 recovered canines (11 labial, 8 palatal); all were moderate (Miller Class I) except for one severe problem (Miller Class III).

**Conclusions:** The OBS-3D lever arm is a biomechanic system that enhances the probability of success by controlling treatment duration and complications. Root resorption on adjacent lateral incisors is best avoided by not bonding a bracket on them during the recovery process. (Reprint from J Digital Orthod 2020;59:24-33) (J Digital Orthod 2023;71:46-55)

**Keywords:**

Maxillary canine, impaction, transposition, bone screw, 3D lever arm, gingival recession, root resorption

## Introduction

Dental nomenclature for this report is a modified Palmer notation, i.e. quadrants are upper right (UR), upper left (UL), lower right (LR) and lower left (LL), and permanent teeth in each quadrant are numbered 1 to 8 from the midline. In 1975, Archer<sup>1</sup> defined an impacted tooth as completely or partially unerupted with an unfavorable position relative to an obstacle (tooth, bone, or soft tissue) that probably prevented eruption. With the exception of third molars, maxillary permanent canines (U3s) are the most common impactions.

There is a variable prevalence among ethnic groups from 0.27% in Japanese<sup>2</sup> to as much as 2.4% in Italians.<sup>3</sup> Females are 2-3 times more frequently affected than males.<sup>3-6</sup> Early diagnosis and treatment is recommended to avoid severe displacement and complete transposition.<sup>5,6</sup> Abnormal position and/or lack of a canine eminence between age 8-10 years are early signs of potential impaction.<sup>7</sup>

Closed eruption and an apically positioned flap are viable approaches,<sup>5,6</sup> but using an archwire as anchorage can result in distortion of the arch,



**Chris H. Chang,**

Founder, Beethoven Orthodontic Center  
 Publisher, Journal of Digital Orthodontics (Left)

**Eric Hsu,**

Lecturer, Beethoven Orthodontic Course (Center)

**W. Eugene Roberts,**

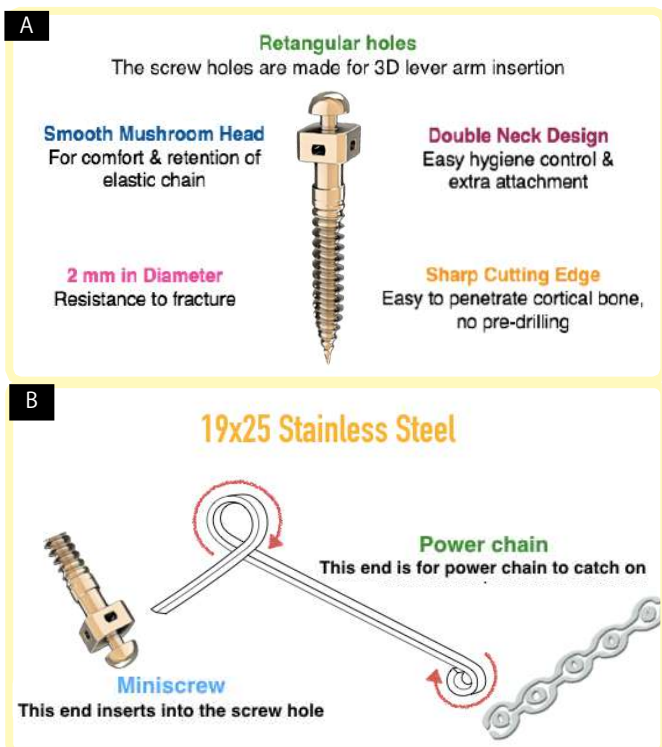
Editor-in-Chief, Journal of Digital Orthodontics (Right)



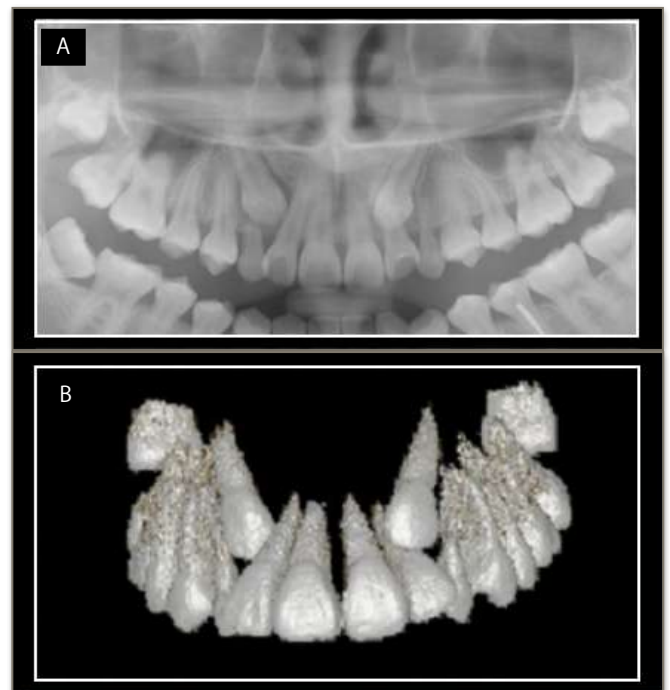
particularly if the canine is or becomes ankylosed.<sup>8</sup> A stainless steel (SS) endosseous OrthoBoneScrew® (OBS) (iNewton, Inc., Hsinchu City, Taiwan) has a rectangular hole (tube) to receive a 0.019x0.025-in SS wire (OBS 3D lever-arm) (Fig. 1). The purpose of this study was to assess the OBS 3D lever arm appliance relative to treatment time, success rate, and complications for a consecutive series of impacted upper canines (I-U3s).

## Material and Methods

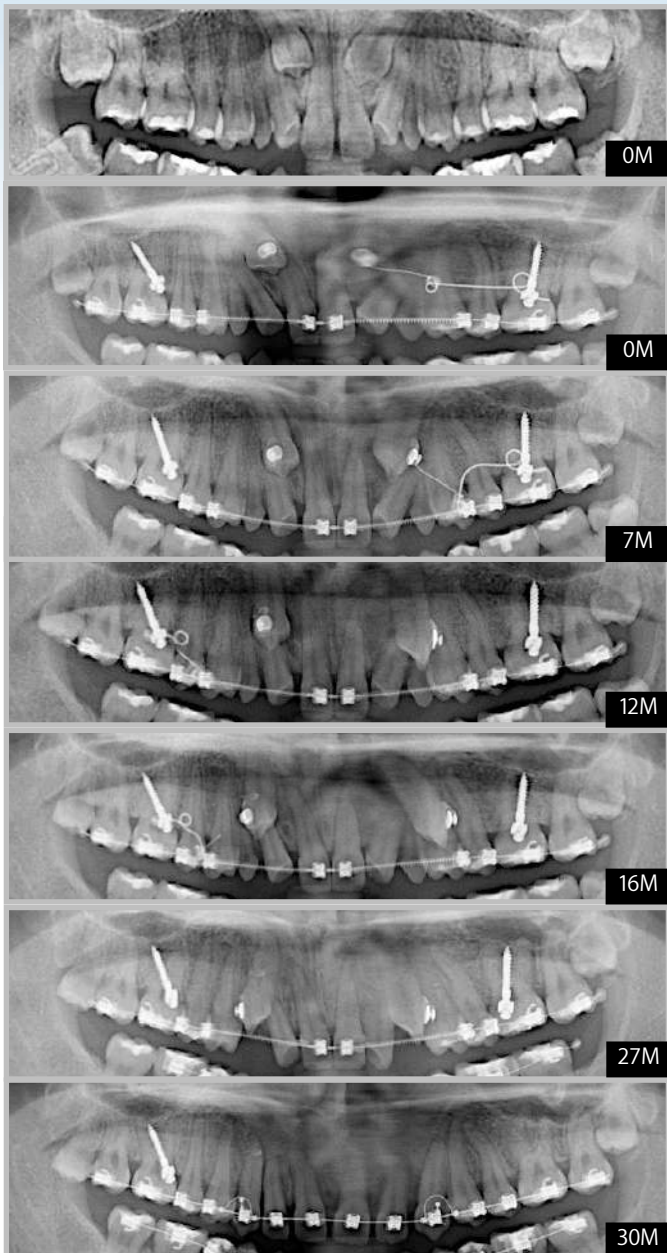
The Institutional Review Board (IRB) of Taiwan Medical Research Ethics Foundation (protocol number: MIC1/19-S-004-1) approved this retrospective study that resulted in 46 consecutive patients with 51 I-U3s. They were treated from 2013–2016 and were all evaluated with cone-beam computed tomography (CBCT) (Fig. 2). The OBS 3D lever arm appliance (Fig. 3) was used for all



**Fig. 1:**  
 A. A 2x14-mm SS bone screw has a rectangular hole (tube) designed to insert a 3D lever arm.  
 B. A 3D lever arm is formed from a 0.019x0.025-in SS wire as shown.



**Fig. 2:**  
 A. A panoramic radiograph is a 2D image that is unreliable for determining the relationship of impactions to the roots of adjacent teeth.  
 B. A CBCT image shows important details in 3D for locating, uncovering, and applying mechanics to recover I-U3s.



■ **Fig. 3:**

A vertical panel of progressive panoramic radiographs documents the recovery of I-U3s from the upper pretreatment image (0M) and the immediate post-operative view (second 0M) to the completion of active treatment at thirty months (30M). Note there are no brackets bonded on the maxillary lateral incisors until after 27 months (27M) to avoid root resorption. See text for details.

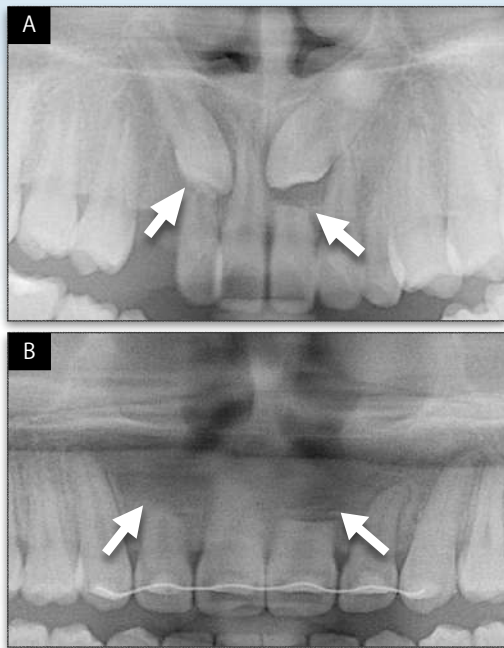
patients, but the surgical exposure varied depending on the location and orientation of the impaction. Pretreatment consultation included a thorough discussion of potential problems such as swelling, temporary facial disfigurement (Fig. 4), and root resorption (Fig. 5).

Palatal impactions were managed conventionally,<sup>6</sup> but labial impactions were exposed with the vertical incision subperiosteal tunnel access (VISTA).<sup>9</sup> The crown of an endosseous I-U3 was located with a surgical explorer.<sup>10</sup> After the crown was exposed, an eyelet was bonded at least 2 mm occlusal to the cemento-enamel junction (CEJ),<sup>11</sup> and all overlying bone was carefully removed to the level of the CEJ (Fig. 6).<sup>12</sup> At the planned location on the infra-zygomatic crest (IZC), a 2x14-mm OBS was installed with the desired orientation of the rectangular tube (Figs. 1B and 3). The custom lever



■ **Fig. 4:**

A. A postoperative complication is shown after a complex surgical intervention to initiate recovery of a transposed I-U3. Note the lip, cheek, and orbital swelling with discoloration one week post-operatively. No additional treatment was indicated.  
B. One week later, the complications were almost resolved.



■ **Fig. 5:**

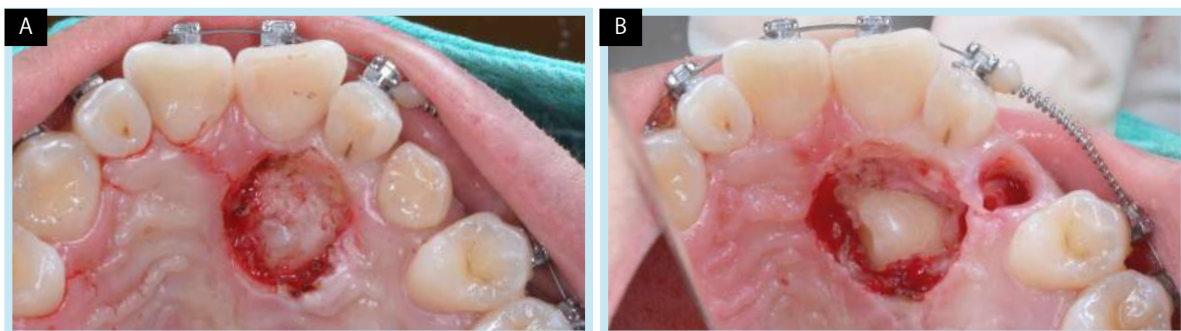
- A. Pre-treatment radiography shows that I-U3s are associated with extensive root resorption (white arrows) on the UR2 and UL1.
- B. Posttreatment radiography reveals that the root resorption is arrested but the loss of root structure is permanent (white arrows).

arm was activated in the prepared plane<sup>13</sup> with a power chain from the impaction to the distal end of the 3D lever arm and both ends were retained with polymerized resin. After activation, the soft

tissue flap was closed, and a post-operative panoramic radiograph was exposed (Fig. 3). Details for the surgical and mechanical procedures are published.<sup>14-17</sup> All clinical procedures for the current sample were performed by the senior author.

## Results

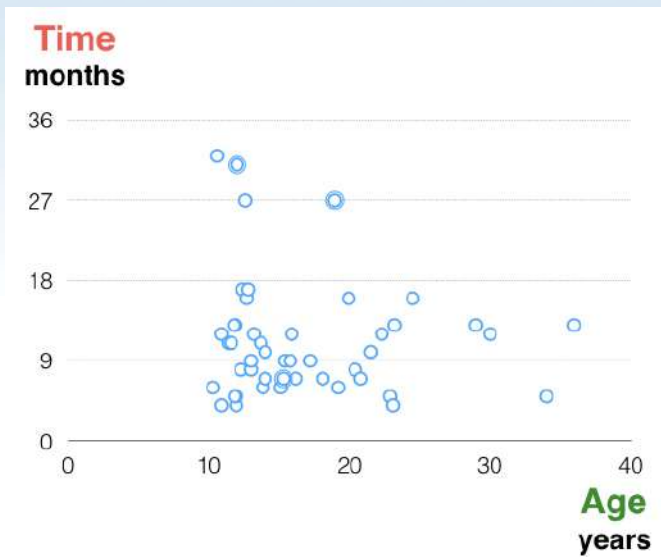
From 2013-2016, 46 consecutive patients (11 male, 35 female, mean age 16.5yr, range 10-36yr) presented with 51 impacted maxillary canines: 41 unilateral, 5 bilateral; 22 right side, 29 left side; and 32 labial, 19 palatal. Surgery was uneventful for all patients except one who sustained facial bruises and swelling that resolved in 7 days (Fig. 4). All 51 I-U3s were successfully recovered and optimally aligned in occlusion. Treatment time after the initial alignment of the I-U3 was a mean of 11.7M (Fig. 7), but the more difficult problems like labial impactions with complete transposition required up to 37M of comprehensive treatment. Four I-U3 patients (3 labial, 1 palatal) experienced mild root resorption (<2 mm) on the adjacent lateral incisor. Gingival recession occurred on 19 canines, (11 labial



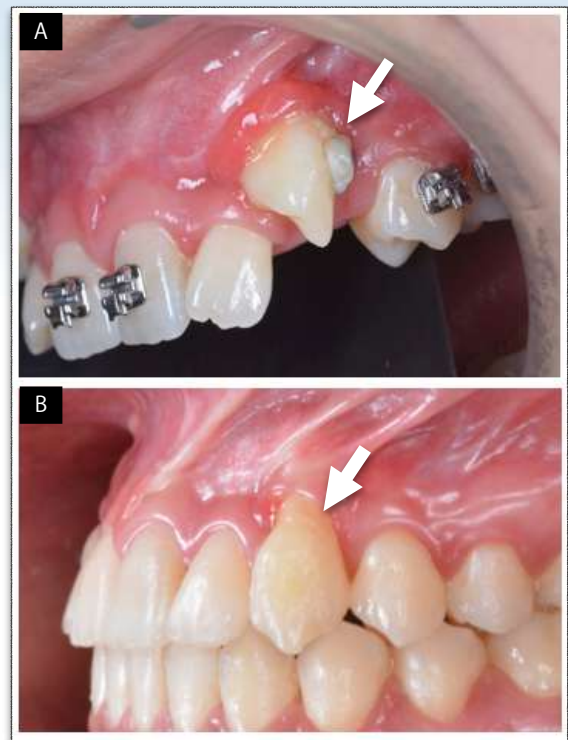
■ **Fig. 6:**

- A. The crown of an impacted canine is evident after the overlying soft tissue is removed.
- B. All bone was carefully removed down to the CEJ in the path of expected tooth movement.





**Fig. 7:** Treatment time in months after the bracket is bonded in the ideal position or on a previously impacted U3 is plotted relative to the age of the patient. See text to details.



**Fig. 8:** A. Plaque accumulation leads to inflammation (red) of the marginal gingiva particularly near an attachment (white arrow). B. Gingival recession (white arrow) is noted on the labial surface of the UL3. See text for details.

and 8 palatal impactions); all were modest (Miller Class I),<sup>16</sup> but one was a Miller Class III (Fig. 8).

## Discussion

Recovering complex I-U3s may be associated with migration of neighboring teeth, loss of arch length, dentigerous cysts, and external root resorption of the impaction or neighboring teeth (Fig. 5).<sup>6,8,12</sup> Extracting I-U3s presents another array of undesirable outcomes such as asymmetry, lack of desired canine function, occlusal interference, eccentric mandibular closure, temporomandibular joint disorder, compromised dental esthetics and/or unstable dental alignment.<sup>6,8,10-12</sup> The OBS-3D lever arm method was designed to simplify the mechanics and limit undesirable outcomes.<sup>13</sup> IZC OBSs are reliable fixtures (failure rate ~7%),<sup>17</sup> and case reports have established the principles for OBS-3D lever arm mechanics, but the performance of the method for a series of complex I-U3s is unknown.

Intuitively, more rapid I-U3 recovery is expected in younger patients,<sup>18</sup> but the current study revealed that the average treatment time (11.7 months) was similar for children and adults (Fig. 7). In contrast to a previous report with a smaller sample (n=30) of primarily palatal impactions,<sup>18</sup> the current study found that the position of the I-U3 was the prime determinant for duration of treatment. The current sample (n=51) was primarily labial impactions (32), which are usually more difficult than palatal impactions and are prone to complications,<sup>5,6,8,10-12</sup> particularly for a transposition.<sup>19-22-24</sup> Patients with complete transpositions were consistently more difficult to treat, and required extended treatment duration (>17 months) (Fig. 7).

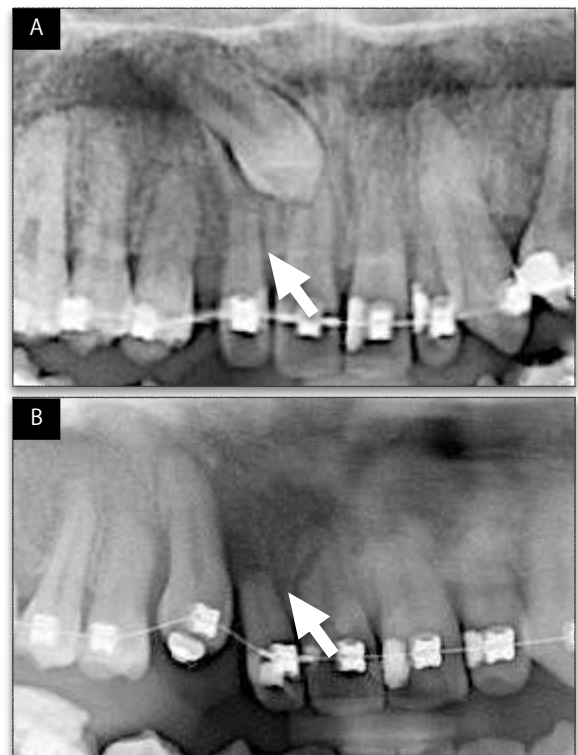


Most prevalence studies report about two-thirds of I-U3 are palatal.<sup>20</sup> However, I-U3s in Chinese are two-thirds labial (facial) which probably reflects a high prevalence for midface deficiency.<sup>21</sup> In 1995, Peck<sup>22</sup> reported an international sample of transposed I-U3s as: 1) first premolar 71%, 2) lateral incisor 20%, and 3) all other teeth 9%. Tooth transposition is almost always in the maxilla, and it affects ~0.4%<sup>24</sup> of the population worldwide, but the anomaly is more common in Europeans (2%)<sup>25</sup> and Chinese (0.81%).<sup>21</sup> In comparison, 67% of the current Taiwanese sample (n=51) showed multiple types of I-U3 transposition: coronal (21), radicular (2), and complete (11).<sup>23</sup> Transposition with the lateral incisor (17) was the most common,<sup>24</sup> but 12 involved both the central and lateral incisors, and 5 were transposed with the first premolar. The high prevalence of difficult I-U3 transpositions suggests preferential referral to the senior author's clinic.

Complications associated with the surgically-assisted I-U3 recovery include gingival recession,<sup>26</sup> ankylosis,<sup>8,27</sup> root resorption,<sup>28</sup> and poor control of axial inclination.<sup>6,18</sup> Inadequate torque control is a common problem when an I-U3 is aligned. Bracket torque selection is helpful, but torquing auxiliaries are commonly required. One of the more refractory complications is the control of soft tissue inflammation.<sup>20,26,27</sup> Oral hygiene is very difficult particularly for patients with high impactions and unfavorable soft tissue contours (Fig. 8). Plaque accumulation produces inflammation and the soreness discourages effective hygiene. Persistent inflammation results in gingival recession. In addition, the problem may be associated with positioning the eyelet too near the CEJ (Fig. 8). Moderate recession can usually be restored with

periodontal surgery, but severe recession and loss of labial bone threatens the long-term outcome for a recovered canine.<sup>26,27</sup> The only patient in the present series with severe gingival recession (Miller Class III)<sup>16</sup> was a labial impaction with massive loss of buccal bone at the time it was surgically uncovered (Fig. 8). Despite severe gingival recession at the end of treatment, the affected U3 was well aligned and functioned normally, but soft tissue correction<sup>9</sup> may be necessary in the future.

Root resorption associated with U3 impactions in Asians has a high incidence, up to 49.5%.<sup>28</sup> The adjacent lateral incisor root is the most commonly



■ **Fig. 9:**

- A. UR1 and UR2 (white arrow) are bonded with brackets and engaged on the archwire.  
 B. Severe root resorption (white arrow) is noted on the UR1 and UR2 after the impacted UR3 is retracted and extruded into the arch. See text for details.

affected tooth (Fig. 9).<sup>29</sup> In comparison, the prevalence of lateral incisor resorption for the present sample was much lower (4/51 or 7.8%). This positive outcome was associated with not engaging a tooth near an impaction on the archwire (Fig. 3), so that the root is free to move out of the way as the impaction is recovered.<sup>24</sup> Once the canine is properly positioned in the arch, then a full fixed appliance is indicated to achieve final alignment.

Retention is often a difficult problem for recovered impactions because a relapse tendency due to stretched gingival supracrestal fibers.<sup>30</sup> Supracrestal fiberotomy<sup>31</sup> and a bonded fixed retainer are recommended for reliable retention.

## Conclusions

Surgically assisted recovery of I-U3s with a OBS-3D lever arm is a reliable procedure with few complications. CBCT imaging is used for prospectively planning minimally invasive surgery and applied mechanics. Careful removal of bone to the level of the CEJ is required prior to applying traction. Progress should be carefully monitored radiographically. Retention is best accomplished with supracrestal fiberotomy followed by a fixed retainer.

## References

1. Archer WH. Oral and maxillofacial surgery. Vol. 1. Philadelphia: WB Saunders; 1975.
2. Takahama Y, Aiyama Y. Maxillary canine impaction as a possible microform of cleft lip and palate. *Eur J Orthod* 1982;4:275-277.
3. Sacerdoti R, Baccetti T. Dentoskeletal features associated with unilateral or bilateral palatal displacement of maxillary canines. *Angle Orthod* 2004;74:725-732.
4. Oliver RG, Mannion JE, Robinson JM. Morphology of the maxillary lateral incisor in cases of unilateral impaction of the maxillary canine. *Br J Orthod* 1989;16:9-16.
5. Becker A, Smith P, Behar R. The incidence of anomalous maxillary lateral incisors in relation to palatally-displaced cuspids. *Angle Orthod* 1981;51:24-29.
6. Johnston WD. Treatment of palatally impacted canine teeth. *Am J Orthod* 1969; 56:589-596.
7. Coulter J, Richardson A. Normal eruption of the maxillary canine quantified in three dimensions. *Eur J Orthod* 1997;19:171-183.
8. Garcia A. Ankylosis of impacted canines: a retrospective post-surgical study. *Int Orthod* 2013;11(4):422-31.
9. Zadeh HH. Minimally invasive treatment of maxillary anterior gingival recession defects by vestibular incision subperiosteal tunnel access (VISTA) and platelet-derived growth factor BB. *Int J Periodontics Restorative Dent* 2011;31:653-660.
10. Su B, Hsu YL, Chang CH. Soft tissue considerations for the management of impactions. *News & Trends in Orthodontics* 2011;22:54-9.
11. Su B, Hsu YL, Chang CH, Roberts WE. Soft tissue considerations for the management of impactions. *Int J Orthod Implantol* 2011;24:50-59.
12. Discacciati JA, de Souza EL, Costa SC, Sander HH, Barros Vde M, Vasconcellos WA. Invasive cervical resorption: etiology, diagnosis, classification and treatment. *J Contemp Dent Pract* 2012;13(5):723-728.
13. Hsu YL, Chang CH, Roberts WE. OrthoBoneScrew: the dream screw for next generation's orthodontists. *News & Trends in Orthodontics* 2011;23:34-49.
14. Chang A, Chang CH, Roberts WE. Simplified open-window technique for a horizontally impacted maxillary canine with a dilacerated root. *Int J Orthod Implantol* 2011;39:76-84.
15. Cheng J, Chang CH. Simplified open-window technique for palatally-impacted cuspids. *Int J Orthod Implantol* 2012;25:48-52.

16. Miller PD Jr. A classification of marginal tissue recession. *Int J Periodontics Restorative Dent* 1985;5:8-13.
17. Chang CH, Lin JS, Roberts WE. Failure rates for stainless steel versus titanium alloy infrazygomatic crest bone screws: A single-center, randomized double-blind clinical trial. *Angle Orthod* 2019;89(1):40-46.
18. Iancu Potrubacz M, Chimenti C, Marchione L, Tepedino M. Retrospective evaluation of treatment time and efficiency of a predictable cantilever system for orthodontic extrusion of impacted maxillary canines. *Am J Orthod Dentofacial Orthop* 2018;154(1):55-64.
19. Yan B, Sun Z, Fields H, Wang L, Luo L. Etiologic factors for buccal and palatal maxillary canine impaction: a perspective based on cone-beam computed tomography analyses. *Am J Orthod Dentofacial Orthop* 2013;143(4):527-34.
20. Manne R, Gandikota CS, Juvvadi SR, Rama HR, Anche S. Impacted canines: Etiology, diagnosis, and orthodontic management. *J Pharm Bioallied Sci* 2012;4(Suppl 2):S234-8.
21. Cho SY, Chu V, Ki Y. A retrospective study on 69 cases of maxillary tooth transposition. *J Oral Sci* 2012;54(2):197-203.
22. Peck S, Peck L. Classification of maxillary tooth transpositions. *Am J Orthod Dentofacial Orthop* 1995;107:505-17.
23. Rai A, Sachan A, Verma VK. Transposition revisited: new classification and notation system. *J Indian Orthod Soc* 2016;50:228-33.
24. Hsu YL, Chang CH, Roberts WE. Canine-lateral incisor transposition: controlling root resorption with a bone-anchored t-loop retraction. *Am J Orthod Dentofacial Orthod* 2016;150:1039-50.
25. Bourzgui F, Sebbar M, Ait Ikiss J, Hamza M, Abidine Z, El Quars F. Tooth transposition: a descriptive study in a 547-patient sample. *Int Orthod* 2012;10(3):311-7.
26. Incerti-Parenti S, Checchi V, Ippolito DR, Gracco A, Alessandri-Bonetti G. Periodontal status after surgical-orthodontic treatment of labially impacted canines with different surgical techniques: a systematic review. *Am J Orthod Dentofacial Orthop* 2016;149(4):463-476.
27. Koutzoglou SI, Kostaki A. Effect of surgical exposure technique, age, and grade of impaction on ankylosis of an impacted canine, and the effect of rapid palatal expansion on eruption: a prospective clinical study. *Am J Orthod Dentofacial Orthop* 2013;143(3):342-52.
28. Kim Y, Hyun H-K, Jang K-T. The position of maxillary canine impactions and the influenced factors to adjacent root resorption in the Korean population. *Eur J Orthod* 2012;34(3):302-306.
29. Yan B, Sun Z, Fields H, Wang L. Maxillary canine impaction increases root resorption risk of adjacent teeth: a problem of physical proximity. *Am J Orthod Dentofacial Orthop* 2012;142(6):750-7.
30. Roberts WE. Bone physiology, metabolism and biomechanics in orthodontic practice. In: *Orthodontics: Current Principles and Techniques*. Chapter 10. 5th ed. Graber LW, Vanarsdall RL Jr, Vig KWL (Eds). St. Louis: Elsevier Mosby; 2012. pp. 287-343.
31. Kaplan RG. Supracrestal fiberotomy. *J Amer Dent Ass* 1977;95:1127-1132.



Case No.	Sex	Side R or L	Facial (F) or Palatal (P)	Time (months)	Age at surgery	Transpose with	Complications
1	F	L	F	11	13Y7M		gingiva recession I
2	F	R	F	32	10Y6M	4	
3	F	R	F	27	12Y6M	1, 2	gingiva recession I
4	F	L	F	12	22Y3M	4, 5	gingiva recession I
5	F	R	P	16	19Y9M	1, 2	
6	F	R	F	8	12Y3M	2	
7	F	R	P	8	13Y	2	
8	F	R	P	12	13Y2M	1, 2	
9	F	R	P	10	21Y5M	2	
10	F	R	P	7	18Y1M	2	
11	F	L	F	13	11Y1M	1, 2	
		R	F	5	11Y1M	2	UL1, UR2 root resorption (origin, not iatrogenic)
12	F	R	F	4	11Y11M		
13	F	L	F	9	15Y8M		
14	F	L	F	12	10Y9M	2	
15	F	L	P	12	15Y9		
16	F	L	F	27	18Y10M	2	oozing left side gingiva recession I
		R	F	27	18Y10M	2	
17	F	R	P	13	29Y	1, 2	gingiva recession I lateral incisor root resorption
18	F	L	P	6	15Y1M	2	gingiva recession I
19	F	L	F	7	14Y	2	gingiva recession I
		R	F	10	14Y	2	
20	F	R	P	11	11Y4M	1, 2	gingiva recession I
21	F	R	P	5	11Y9M	2	
22	F	L	F	9	17Y2M	1, 2	lateral incisor root resorption
23	F	L	F	5	22Y9M		gingiva recession I
24	F	L	F	9	15Y4M	2	gingiva recession I
25	F	R	F	13	11Y8M	2	

■ **Table 1A: (continued on the next page)**

51 maxillary impactions in 46 patients are classified according to sex, side (right or left), position (facial or palatal), total treatment time (months), age at time of surgery, transposition with an adjacent tooth or teeth (1-8), and complications including gingival recession (Miller type I, II, or III).



Case No.	Sex	Side R or L	Facial (F) or Palatal (P)	Time (months)	Age at surgery	Transpose with	Complications
26	F	R	F	7	15Y3M		
		L	F	7	15Y3M		gingiva recession I
27	F	R	P	16	24Y5M	1, 2	gingiva recession I
28	F	R	F	4	23Y1M	2	gingiva recession I
29	F	L	F	4	10Y11M		
30	F	R	F	6	10Y3M		gingiva recession lateral incisor root resorption
31	F	L	P	7	16Y2M	1, 2	gingiva recession I
32	F	L	F	6	19Y2M	4, 5	gingiva recession I
33	F	L	P	5	34Y		gingiva recession III
34	F	L	P	7	20Y8M		
35	F	L	P	8	20Y4M	1, 2	
36	M	L	F	17	12Y8M		gingiva recession I
37	M	L	F	17	12Y4M	4	gingiva recession I
38	M	L	P	16	12Y7M		gingiva recession I
39	M	R	F	31	12Y		
40	M	L	F	6	13Y9M		
41	M	L	P	5	11Y11M	1, 2	
42	M	L	F	12	30Y		gingiva recession I lateral incisor root resorption
43	M	L	F	11	11Y6M	4	swelling
44	M	R	F	9	13Y	1, 2	gingiva recession I
45	M	L	P	13	23Y2M	2	
46	M	L	P	13	35Y11M	2	gingiva recession I
<b>Total</b>				<b>598</b>			

■ Table 1B: (continued from the previous page)



## OBS Super Set

Created by Dr. Chris Chang, OBS is made of medical grade, stainless steel and titanium, and is highly praised by doctors for its simplistic design, low failure rate and excellent quality. OBS is your must-have secret weapon for maximum, reliable anchorage.



### Smooth Mushroom Head

For comfort & retention of elastic chain

### 4-way Rectangular Holes

For lever arm to solve impacted tooth

### Double Neck Design

Easy hygiene control & extra attachment



Made in Taiwan

New

**Titanium** Higher biocompatibility\*

1.5 | 1.5X8mm

**Stainless Steel\*\***

2.0 | 2.0x12mm

2.7 | 2.0x14mm (with holes)



Buy a Super Set, get **OBS Clinical Guide** (eBook) for free.

\* TADs made of Ti alloy have a lower failure rate compared to SS when placed in thin cortical bone. These results are consistent with a biocompatibility-related tendency for less bone resorption at the bone screw interface. Reference: Failure Rates for SS and Ti-Alloy Incisal Anchorage Screws: Single-Center, Double Blind, Randomized Clinical Trial (J Digital Orthod 2018;52:70-79)

\*\* The overall success rate of 93.7% indicates that both SS and TiA are clinically acceptable for IZC BSs.

Reference: Failure rates for stainless steel versus titanium alloy infrazygomatic crest bone screws: A single-center, randomized double-blind clinical trial (Angle Orthod 2019;89(1):40-46)

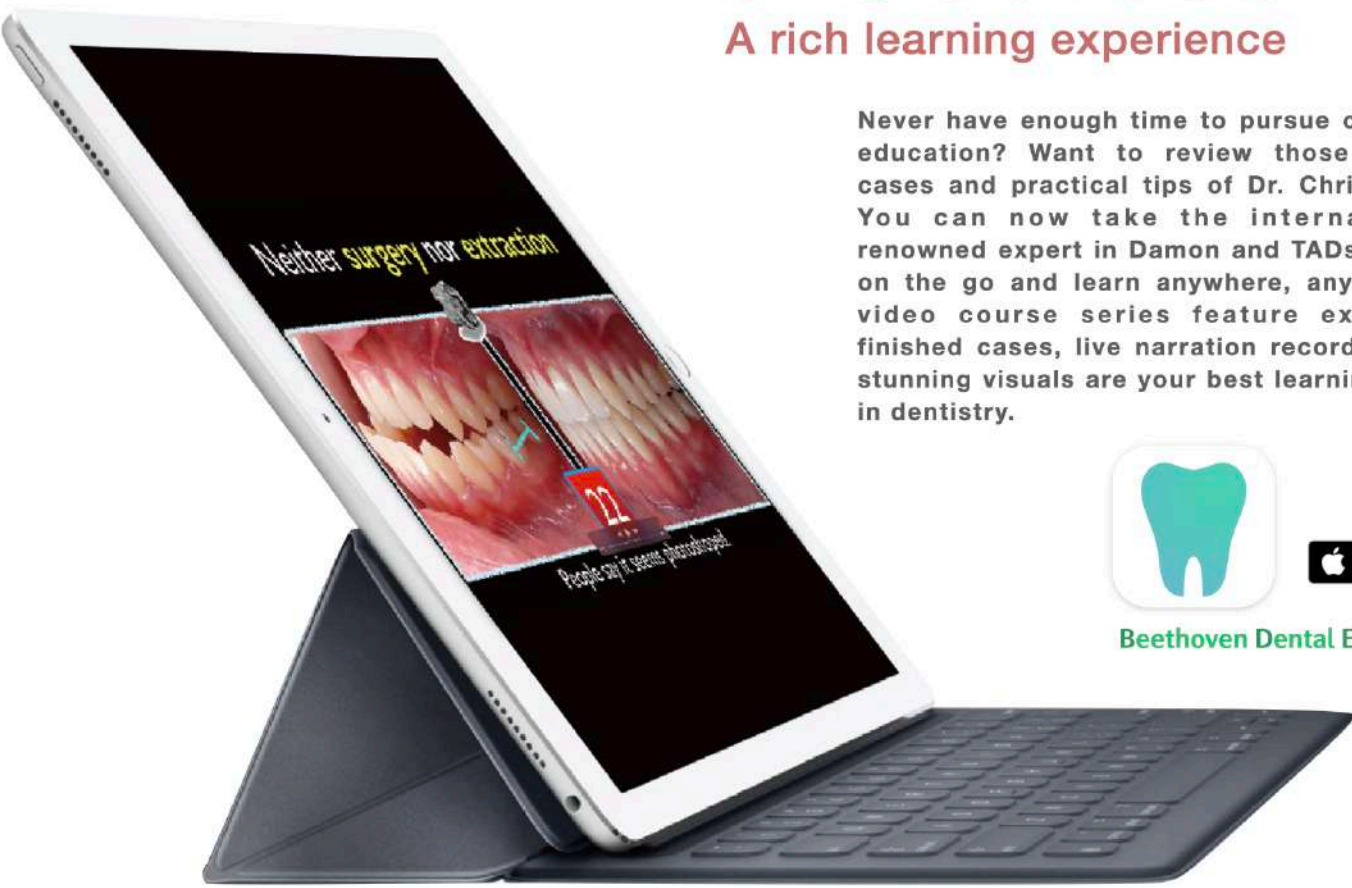
# e-Courses

A rich learning experience

Never have enough time to pursue continuing education? Want to review those amazing cases and practical tips of Dr. Chris Chang? You can now take the internationally renowned expert in Damon and TADs with you on the go and learn anywhere, anytime. The video course series feature excellently finished cases, live narration recordings, and stunning visuals are your best learning source in dentistry.



Beethoven Dental E-Learning



**Series** Each video course is valid for 3 years



**Damon Master**



**E-Lecture**



**OBS (TAD)**



**Finishing**  
(14 seasons)



**Implant Forum**  
(9 seasons)



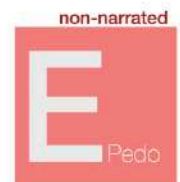
**Assistant**



**E-Ortho**



**E-Implant**



**E-Pedo**

**Note:**

1. Most video courses are available in both English and Chinese and are sold separately.
2. Damon Master and OBS (TAD) are renewed annually and each renewal is to be purchased separately with a 50% discount.



# 2023 一年一度 預報享優惠價 Damon Master Program



全新改版的 2023 年貝多芬高效 Damon 矯正大師系列課程，是由國際知名講師張慧男醫師親自規劃及授課，課程特色強調由臨床病例帶動診斷、分析、治療計畫擬定與執行技巧，本年度亦特別加入最新的數位矯正與隱形牙套的內容，並邀請了貝多芬牙科集團各院院長演講特別矯正專題。

此外，透過數位影片反覆觀看，結合矯正與電腦教學，課堂助教協助操作，讓學員在短時間能快速上手，感染「熱愛矯正學，熱愛學矯正」的熱情。

名額有限，一年僅有一次機會在台完整體驗 Damon 矯正大師課程，錯過只能等明年囉！

## Module 1 - 4/13

1. Selecting your ideal first case
2. Bonding position
3. Bonding + BT + ceph tracing
4. TADs + space closing + hook + spring
5. Finishing bending & fixed retainer

Practice: Clinical photography (黃亭雅, 陳韻如醫師)

## Module 2 - 5/11

1. Four stages of efficient orthodontic treatment
2. Simple and effective anchorage system
3. Extraction vs. non-extraction analysis

Practice: Patient photo management (金牛頓工程師)

## Module 3 - 6/8

1. Soft & hard tissue diagnostic analysis
2. Big overjet correction
3. Damon diagnosis & fine-tuning

Practice: Ceph tracing (金牛頓工程師)

## Module 4 - 6/29

1. Excellent finishing
2. Retention & relapse

Practice: Ceph superimposition & measurement (金牛頓工程師)

## Module 5 - 7/13

1. Simplify your system
2. Extraction vs. non-extraction

Practice: Case report demo (陳俊宏醫師)

## ▲ Computer training (Mac): 1:30-3:00 pm

時間：週四全天 (9 am - 5 pm)

地點：金牛頓藝術科技 (新竹市建中一路 25 號 2 樓)

費用含課程視訊\*、iPad、課程電子書與材料。

\*贈送之課程視訊提供兩年時間串流觀看。

報名專線 湧傑 Yong Chieh

北區 邵美珍

02-27788315 #120

中區 張馨云

04-23058915

南區 蔡淑玲

07-2260030

## Module 6 - 7/27

1. Class III correction
2. Class II correction

Topic: Early orthodontic treatment (曾淑萍醫師)

## Module 7 - 8/10

1. Upper impaction
2. Lower impaction
3. Gummy smile correction

Topic: Modified VISTA (蘇荃璋醫師)

## Module 8 - 8/24

1. ABO DI, CRE workshop (林彥君醫師)
2. Open bite

Topic: Modified 2X4 appliance in ortho treatment (徐玉玲醫師)

## Module 9 - 9/7

1. Implant-ortho combined treatment
2. Asymmetry

Topic: Impacted cuspid treatment (張譚文, 張瑜珍, 黃亭雅, 陳韻如醫師)

## Module 10 - 9/21

1. Minor surgeries in orthodontics
2. Digital orthodontics

Topic: Ortho-viewed interdisciplinary treatment (徐重興醫師)

## Module 11 - 9/28

1. Aligner & TADs
2. Keys to aligner learning

Topic: Pre-aligner treatment (林詩詠醫師)

## ▲ Special lecture: 1:30-2:30 pm



LINE@  
官方帳號



Facebook  
官方帳號